



polaroid

# I-2 Tip No.1

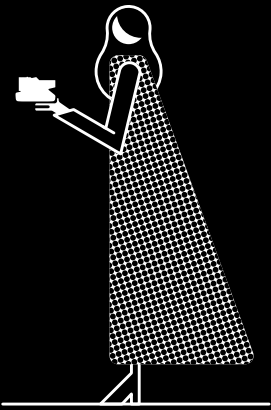
## Instantly Incredible Portraits

The secret to a beautiful portrait is achieving a lovely depth of field, the perfect contrast between the subject in focus and a blurry background. Here's how:

Photography: Sarah Eiseman  
Model: Alisa Xayalith



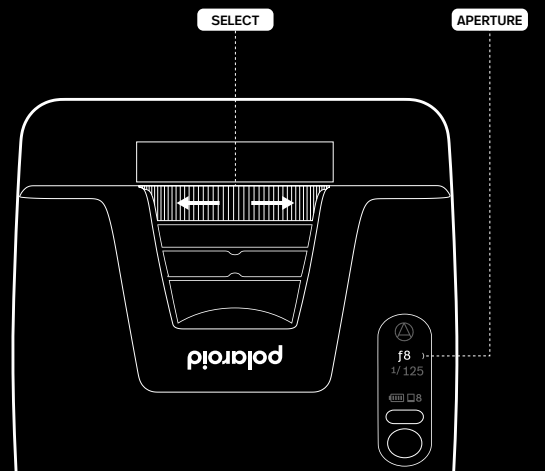
1



2



3

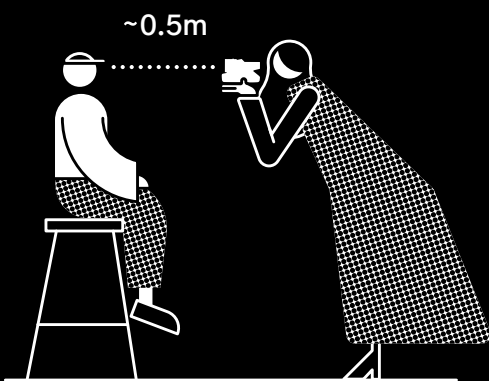


Make sure that your subject is well lit, but always shoot away from your light source. The best conditions are outside on a bright day, or inside with loads of natural light.

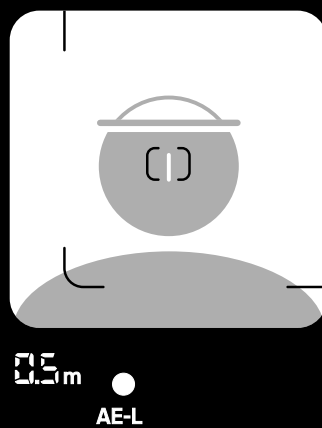
If you're shooting in low-light or see a appear in the viewfinder, hold your camera as still as possible—or even better, use a steady surface or tripod. You can also use the flash.

Make sure you're in Auto mode, then manually select the lowest f/Number (largest aperture) available. This way you'll put the subject fully in focus, and blur the surroundings.

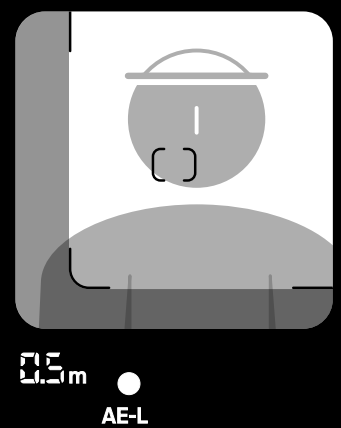
4



5



6

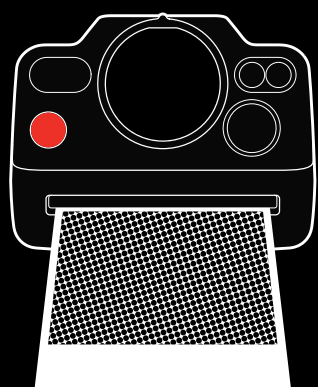


For the lovely depth of field, get about an arm's length away from your subject. (around 0.5m)

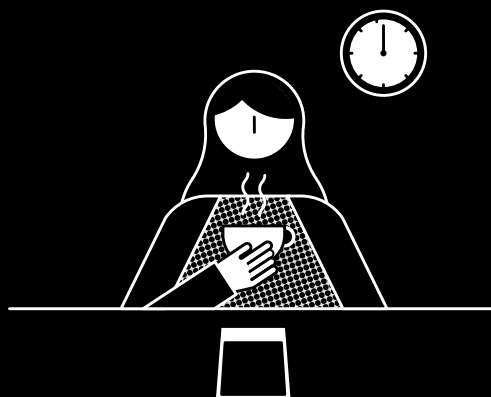
Using the centre of the to aim, half-press the shutter button to lock the focus. Keep the button half-pressed while composing your shot.

Frame your subject within this area of the viewfinder. For a well-composed portrait, don't forget to experiment and get creative with your surroundings.

7



8



## More I-2 Tips

[polaroid.com/i2-tips](https://polaroid.com/i2-tips)



The Polaroid I-2 camera, and you, are capable of so much more. To master light painting, multiple exposures, and to see where else your creativity can take you, check out the rest of our tips.

Your incredible portrait is ready to take! Fully press the shutter button. Your photo will eject under the film shield. Gently lift the film shield to retrieve it.

Place the photo face down and wait for it to fully develop. Then keep it, frame it, share it, love it—and do it all again!

© 2023 Polaroid. All Rights Reserved.

f-2



polaroid